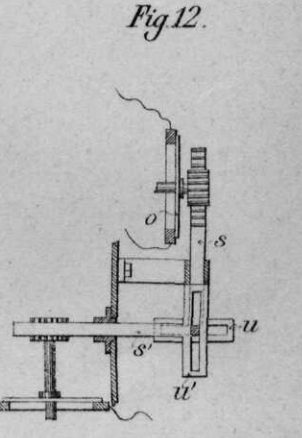
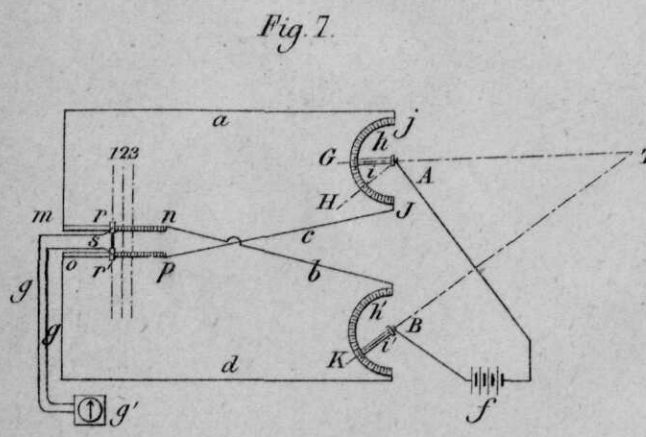
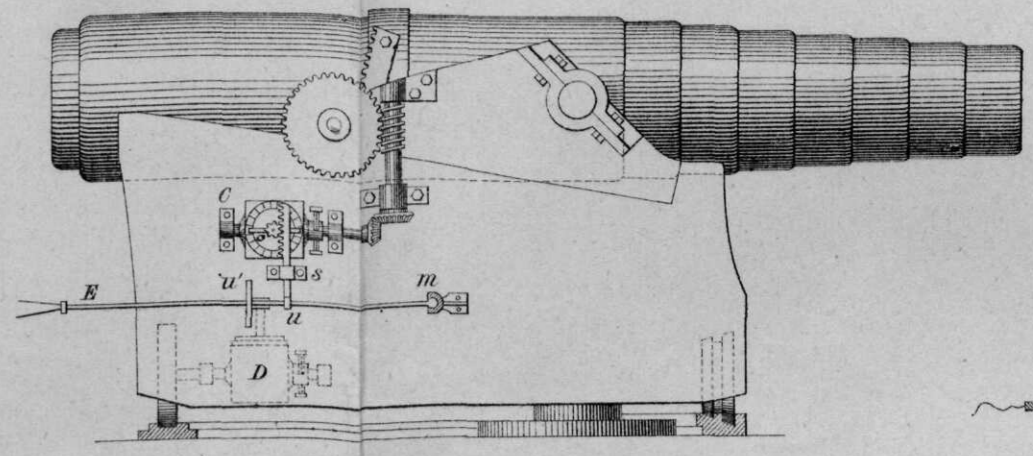
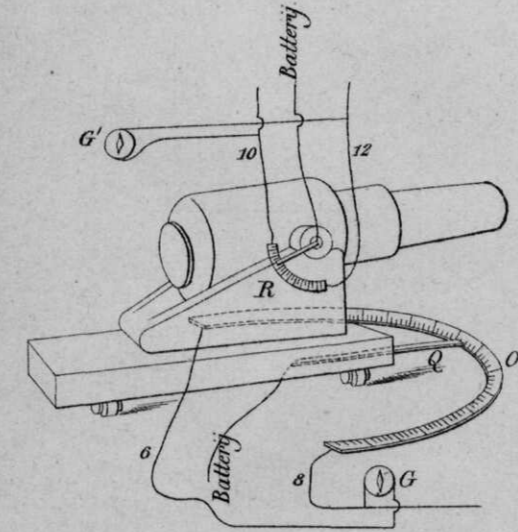
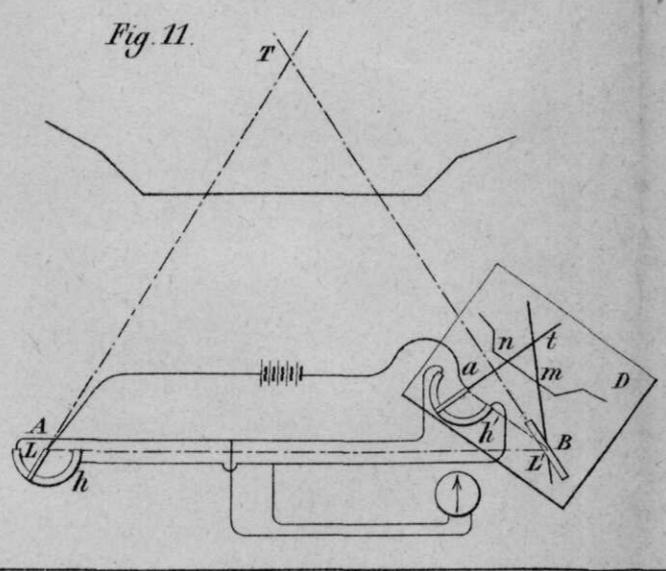
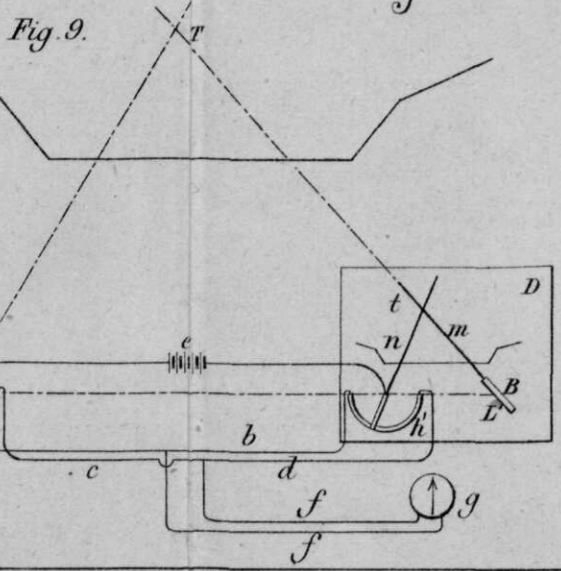
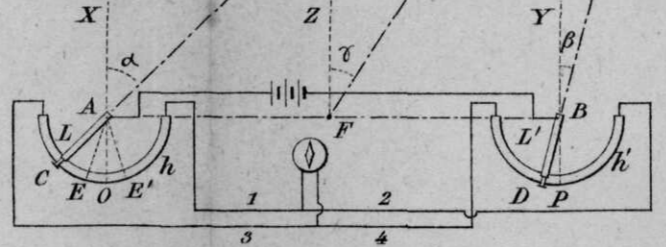
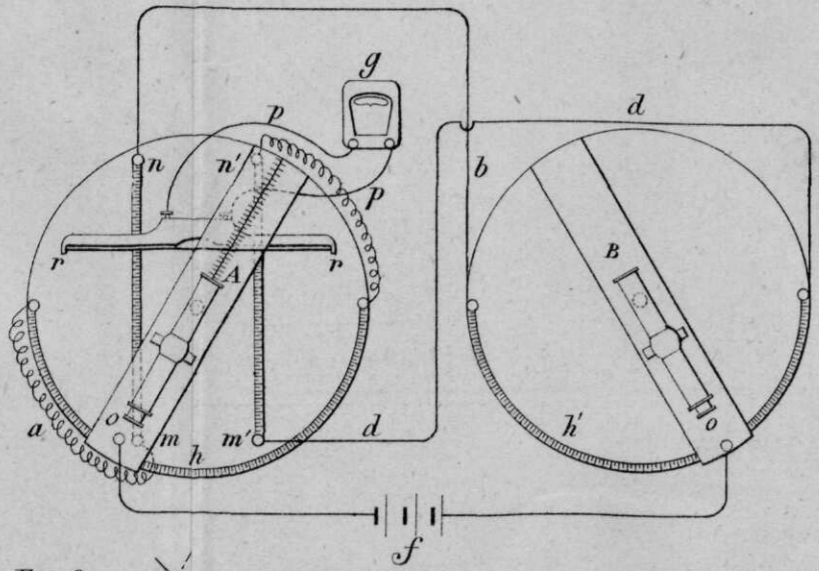
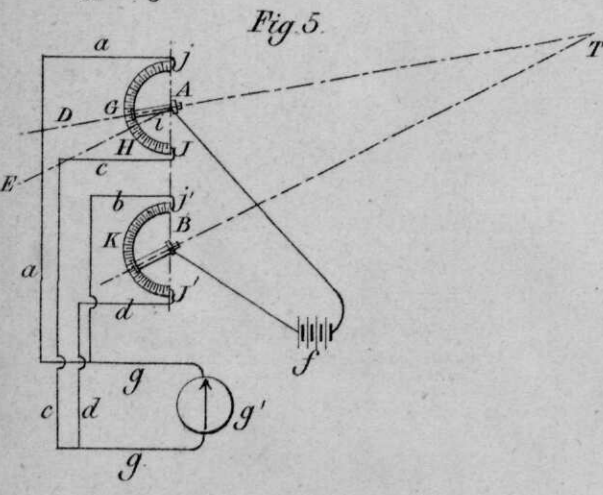
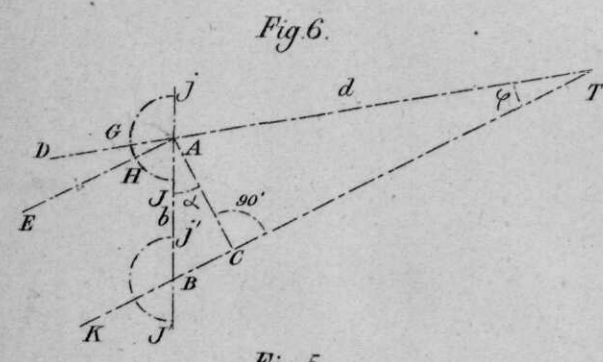
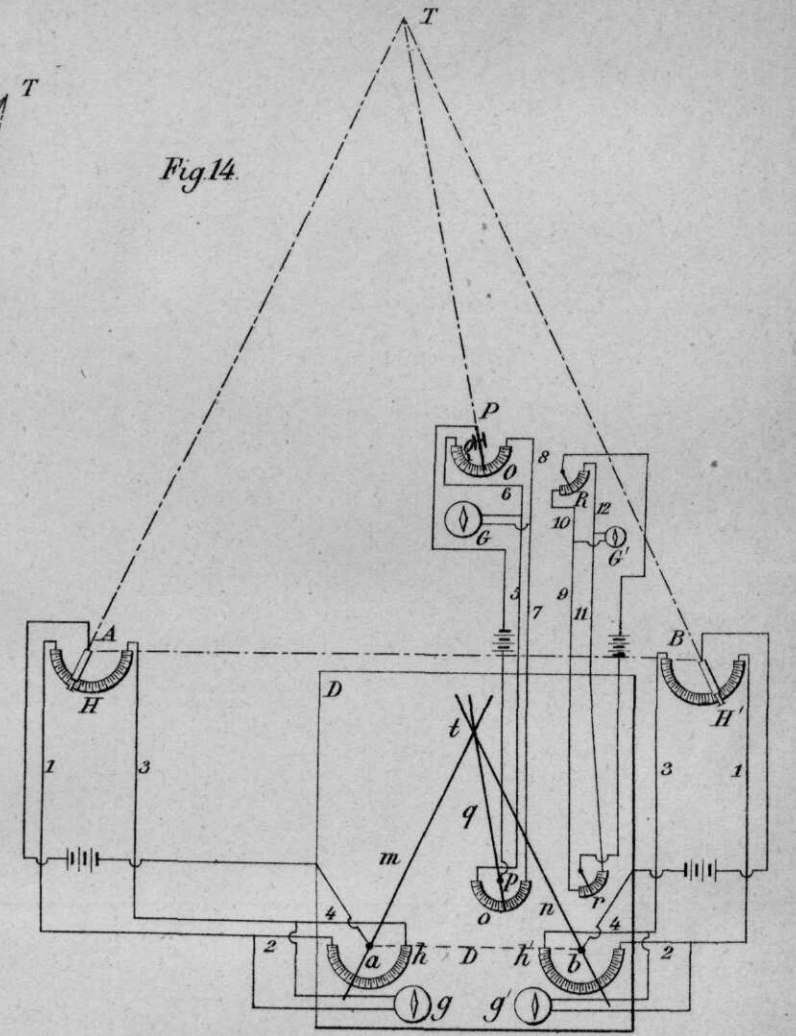
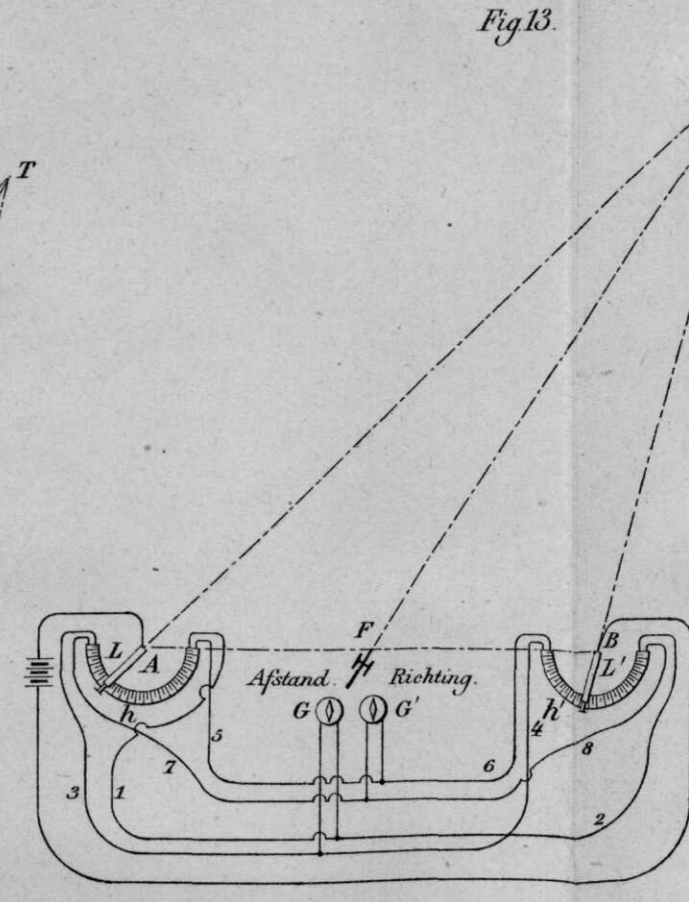
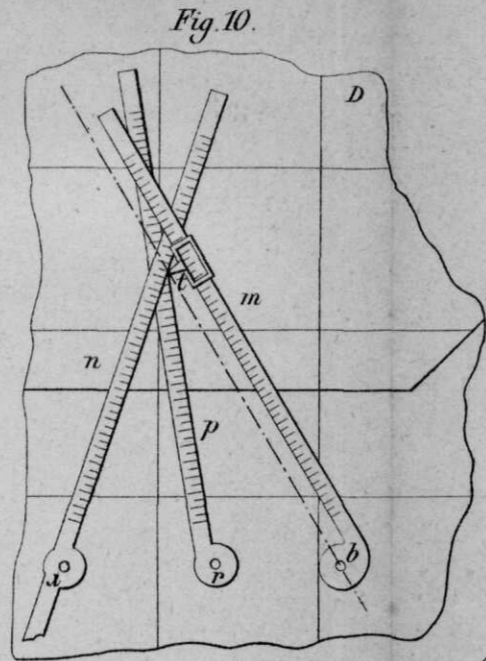
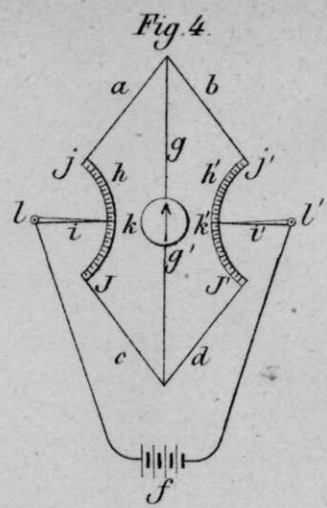
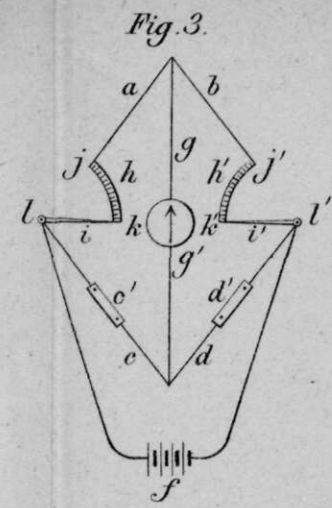
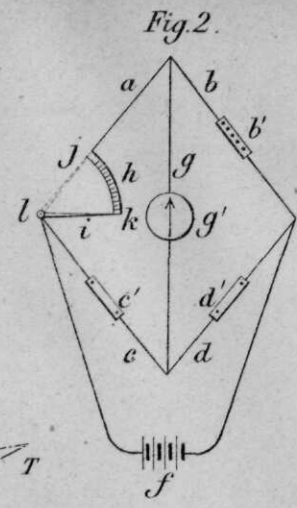
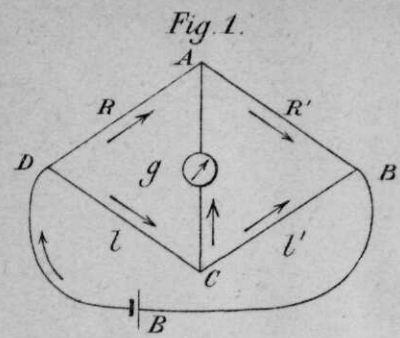


*Verklaring der Teekens.*

- Tegenwoordige kustlijn.
- Bestaande spoorwegen.
- Ontworpen spoorwegen.
- Dijk eener droogmakerij.
- Polderscheiding.
- Scheepvaartkanalen in ringvaarten.
- Scheepvaartkanalen op Polderpeil.
- Schutsluis.
- Stoomgemaal.
- Bestaande forten met inundatie.
- Voorgestelde forten.

Schaal 1:400.000



Artillerie-Materieel „Canet”  
Veldgeschut.

Fig 3 (A)

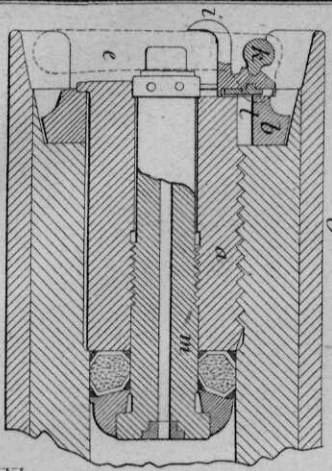


Fig 1 (B)

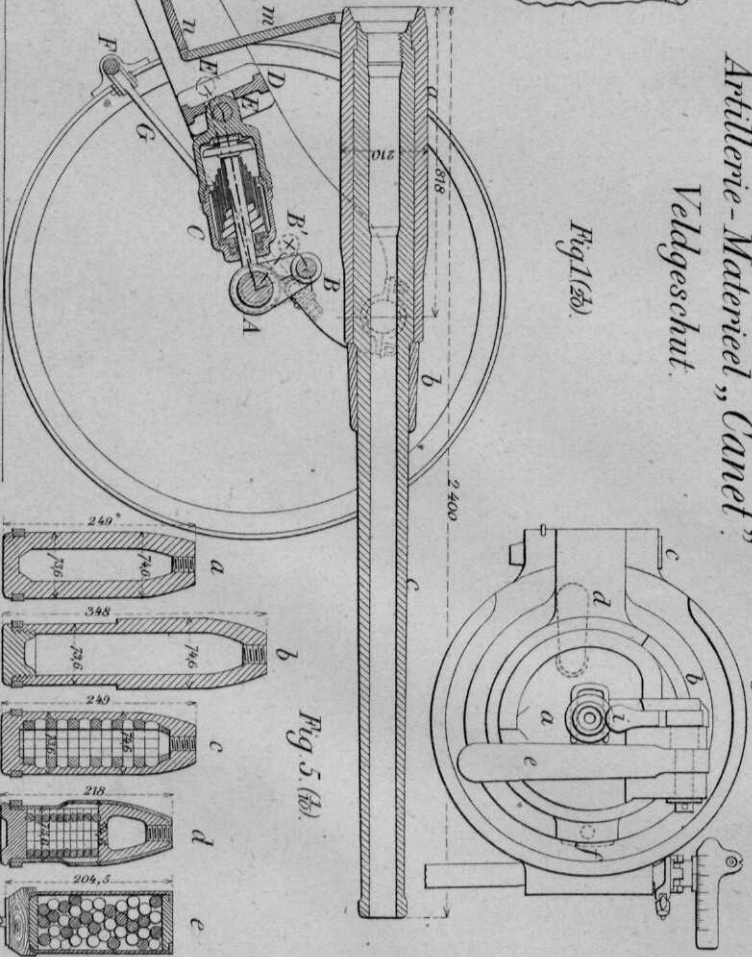


Fig 2 (A)

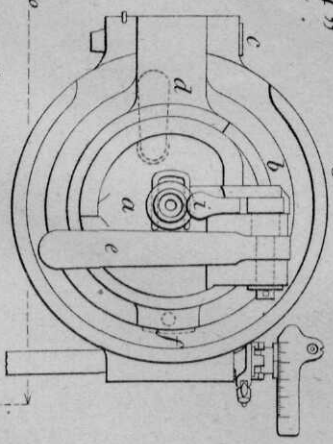
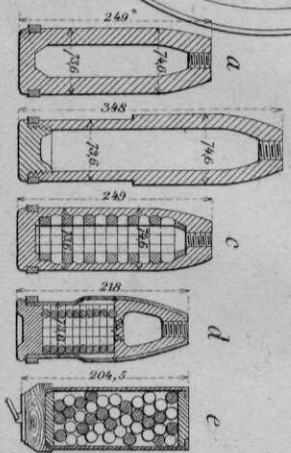
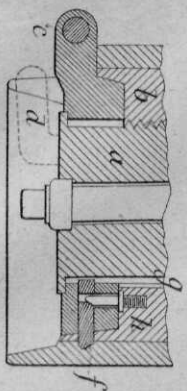


Fig 5 (B)



Afmetingen zijn in millimeters

Fig 4 (A)



Gedrukt by den Drukker, Breda.

Fig. 1. (13).

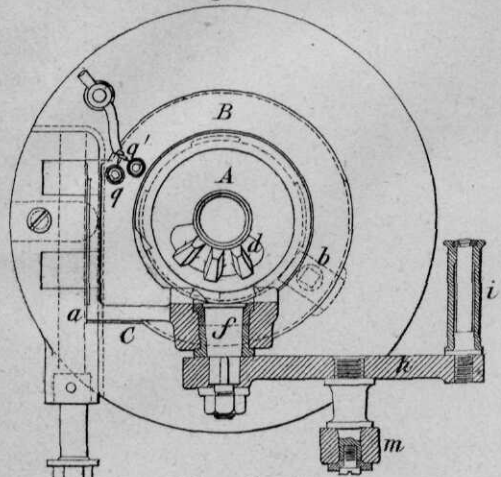


Fig. 3. (13).

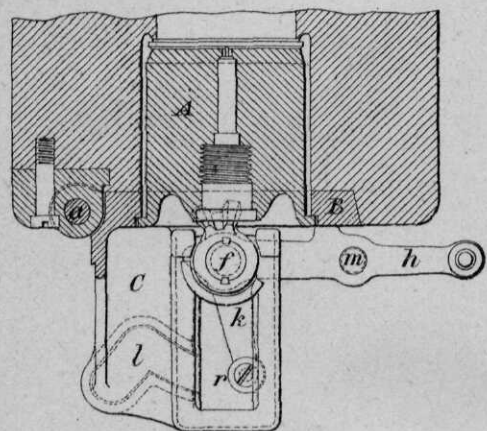


Fig. 6. (13).

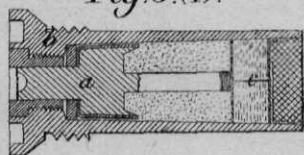


Fig. 9.

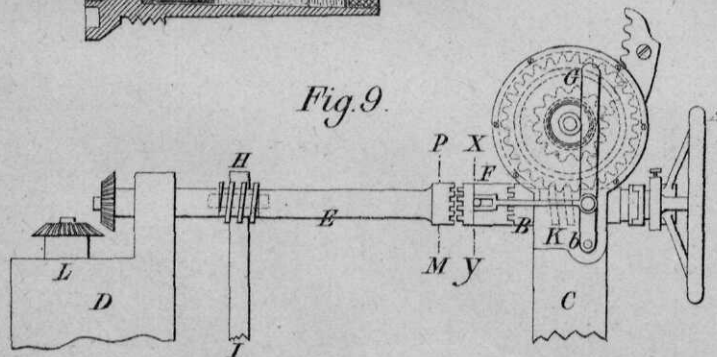


Fig. 2. (13).

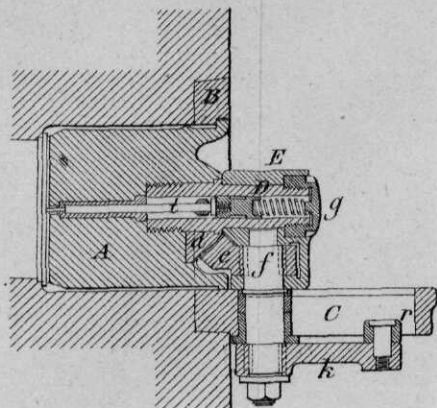


Fig. 5. (13).

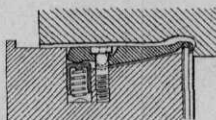


Fig. 4. (13).

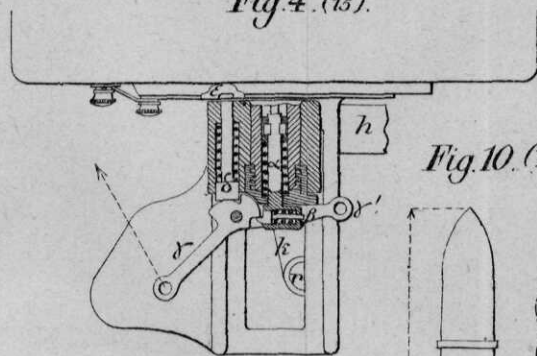
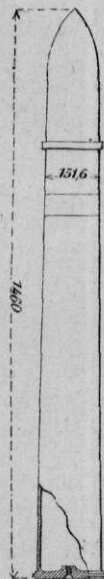


Fig. 10. (20).



Doorsnede PM.

Doorsnede XY.

Artillerie-Materieel „Canet”  
Snelvuur kanonnen.

Fig. 7. (20).

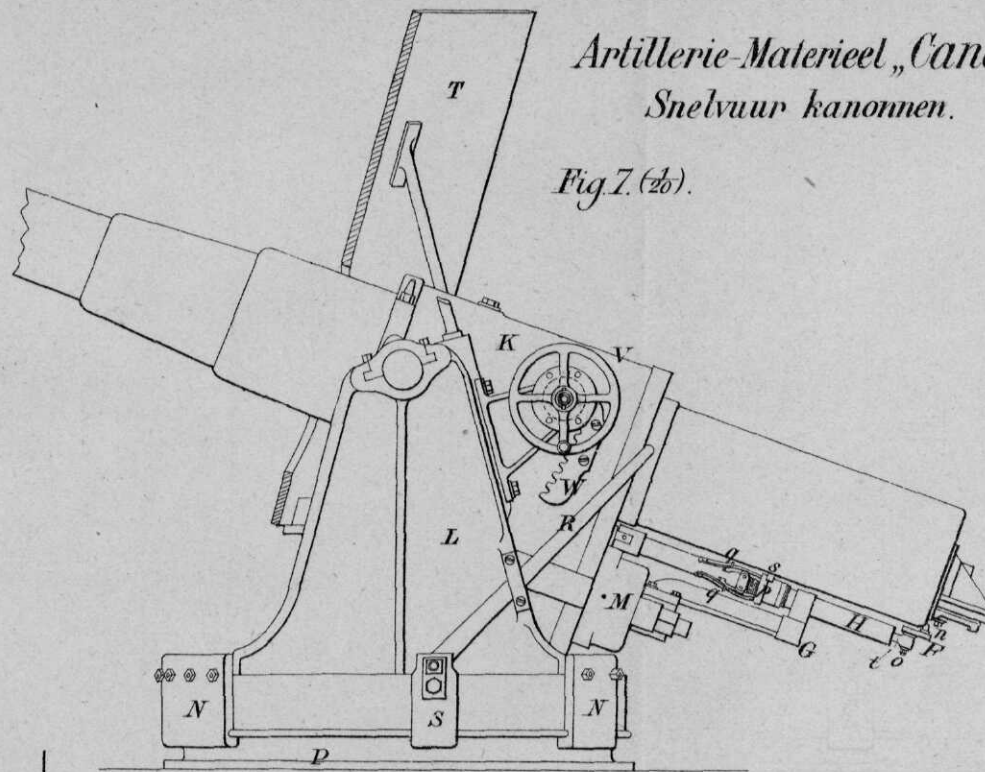


Fig. 8. (20).

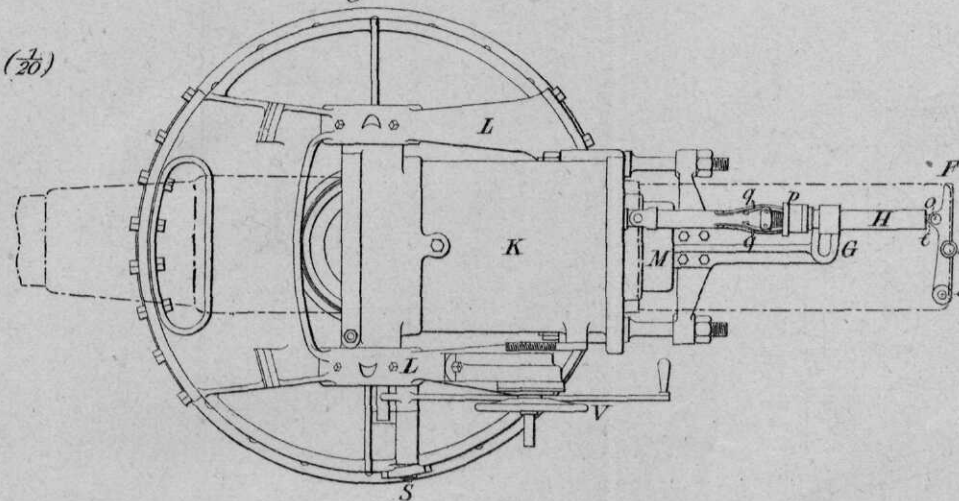


Fig. 8<sup>a</sup>.

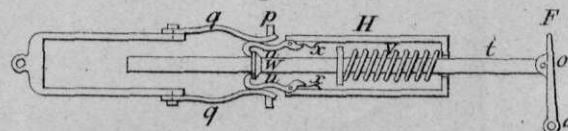




Fig. 1. (13).

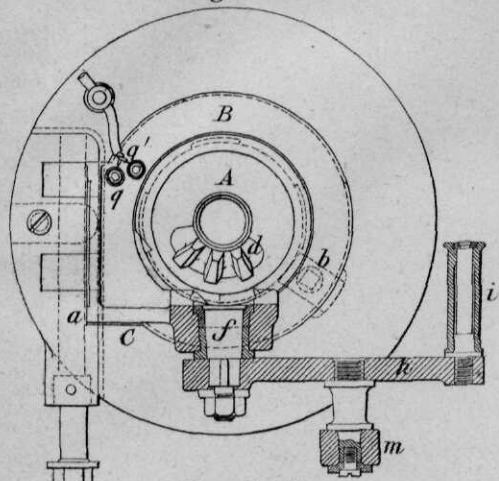


Fig. 3. (13).

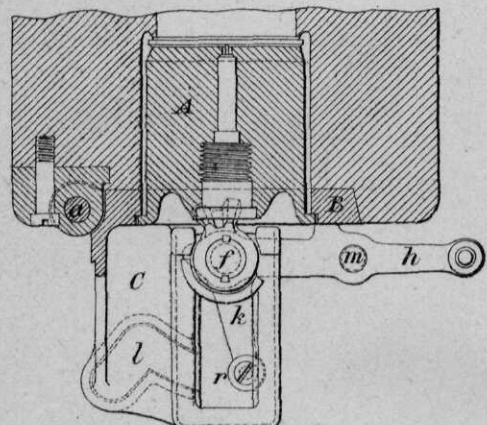


Fig. 6. (13).

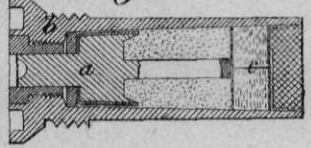


Fig. 9.

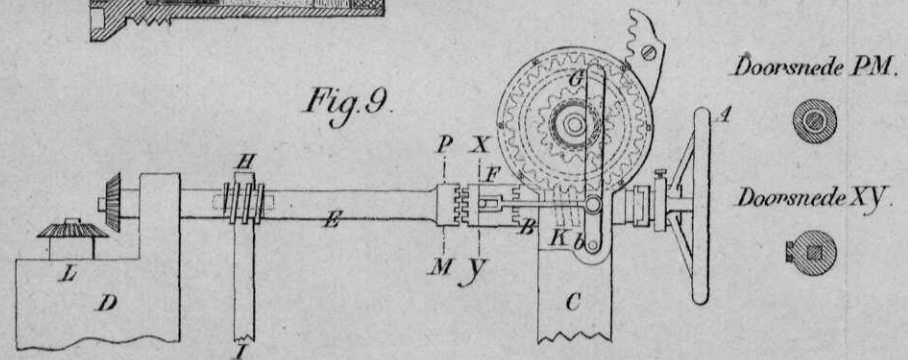


Fig. 2. (13).

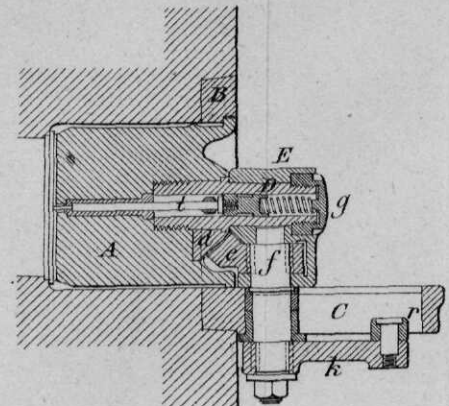


Fig. 5. (13).

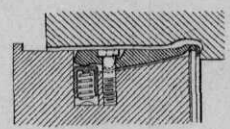


Fig. 4. (13).

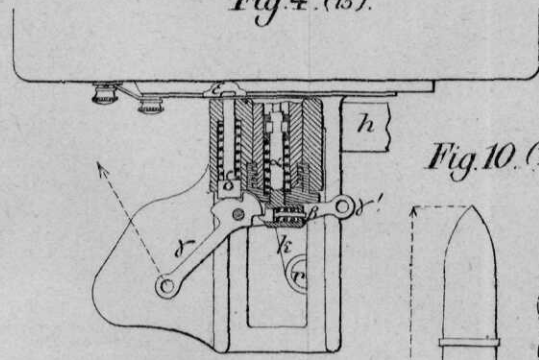
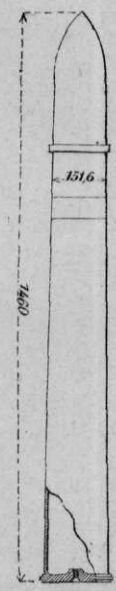


Fig. 10. (20).



Artillerie-Materieel „Canet”  
Snelvuur kanonnen.

Fig. 7. (20).

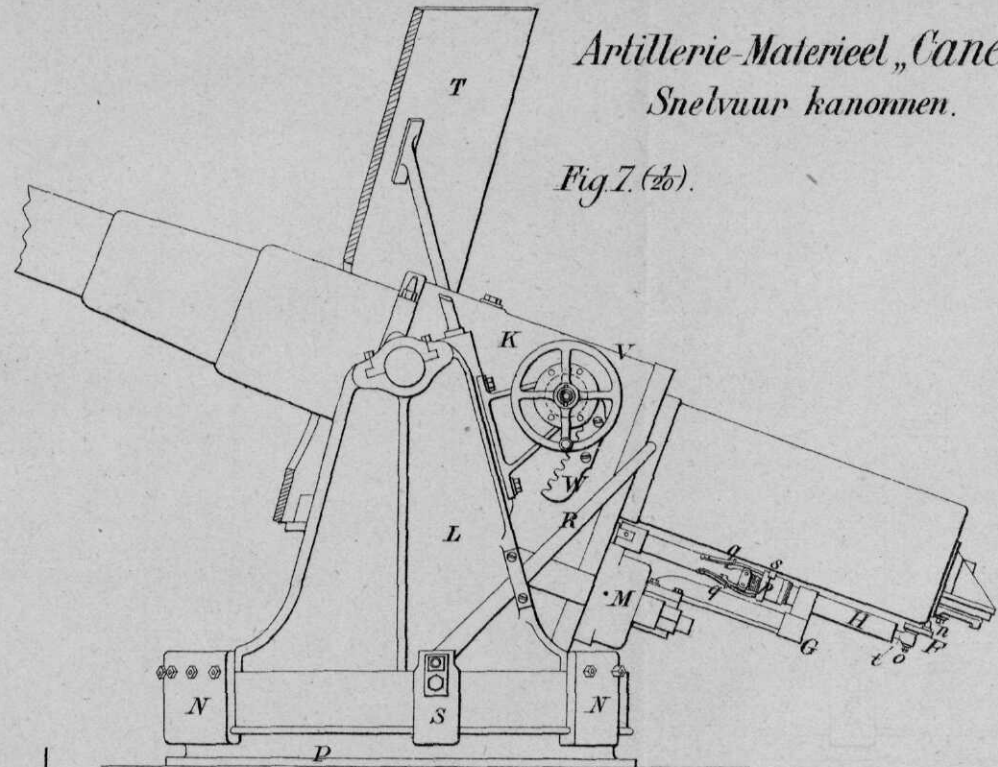


Fig. 8. (20).

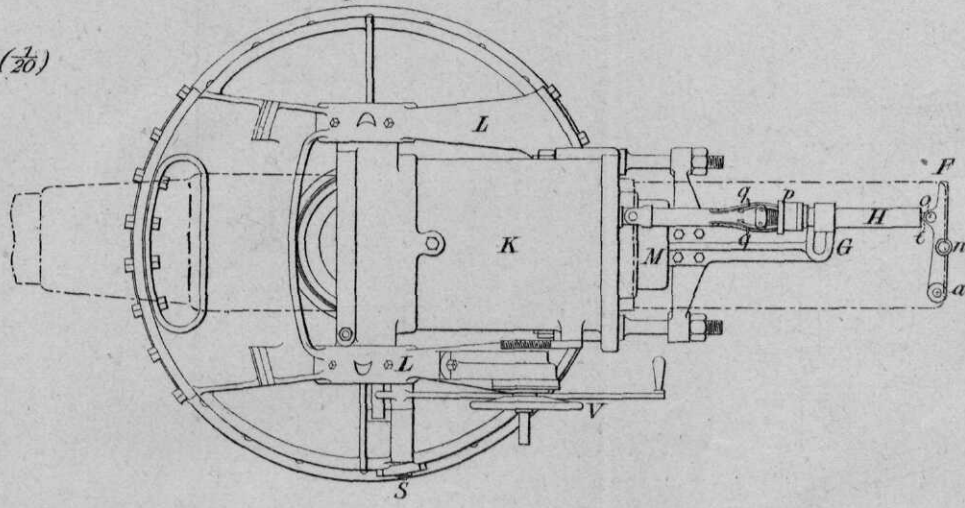


Fig. 8<sup>a</sup>.

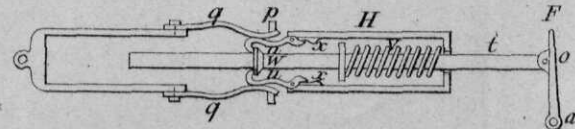


Fig. 1.

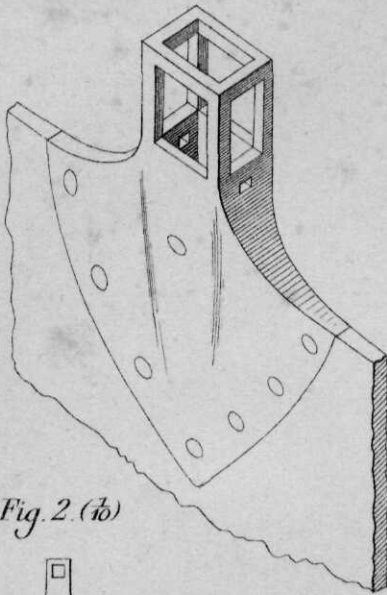


Fig. 8.

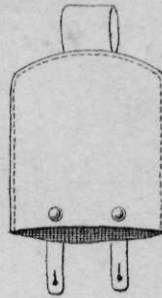


Fig. 2. (2b)

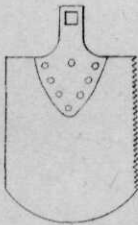


Fig. 4. (3)

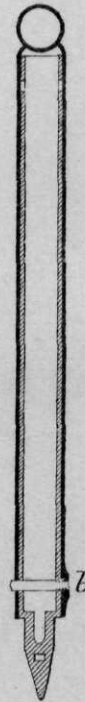


Fig. 3. (2b)

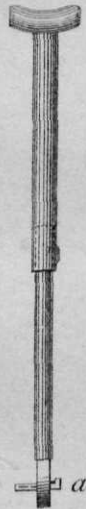


Fig. 5. (2b)



Fig. 6. (2b)

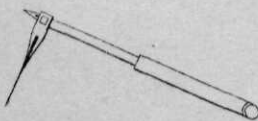


Fig. 7. (2b)

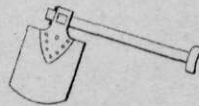


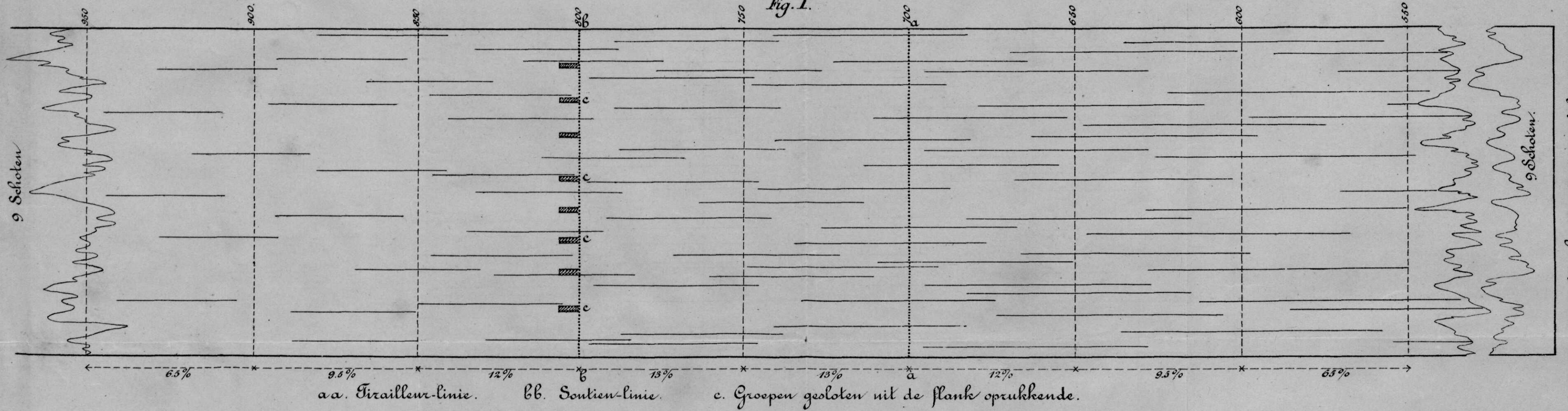
Fig. 9.



Spreiding van 100 Schoten, uit een verdedigende stelling afgevuurd op een tirailleur linie; afstand 700 M, viz. 750 M, aannemende dat ieder man recht voor zich uit vuurt;  $DS_{50} = 200 M$ . De bestreken ruimte van ieder schot is op het horizontale vlak geprojecteerd.

Schaal 1:1000.

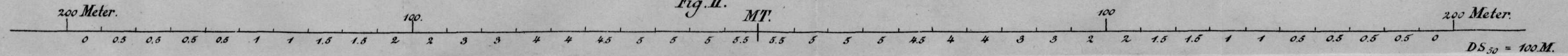
Fig. I.



Strook van de zijdelijke stelling, 100 M breed.

Fig. II.

MT.





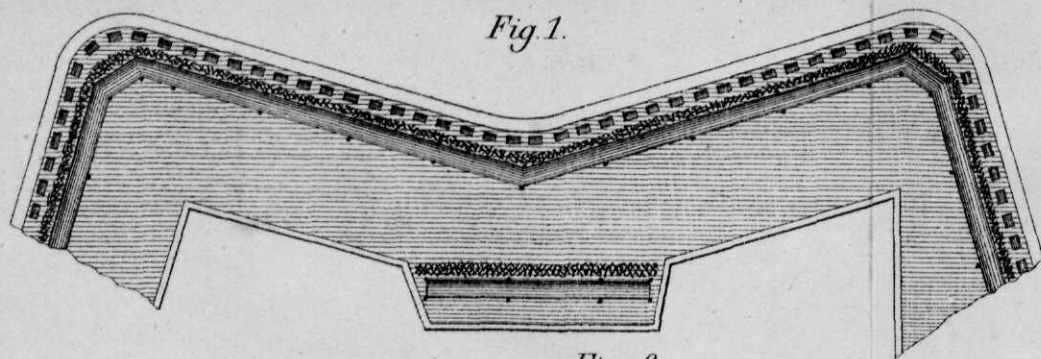


Fig. 1.

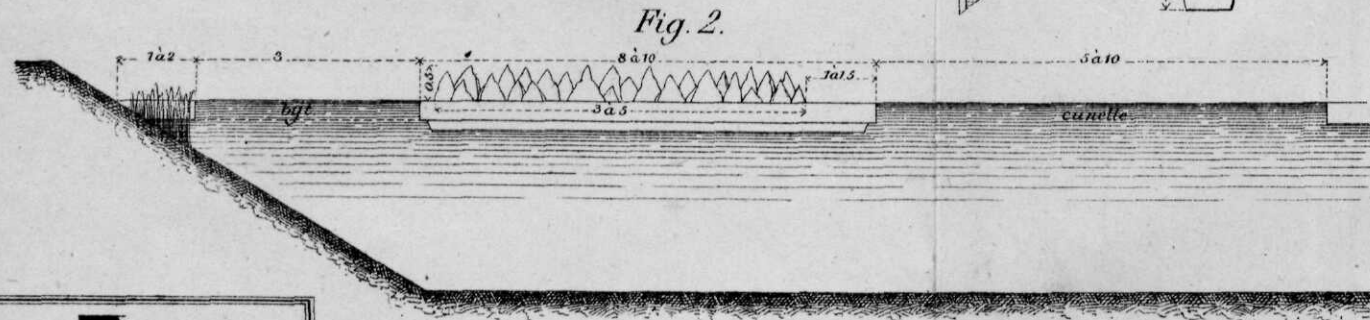


Fig. 2.

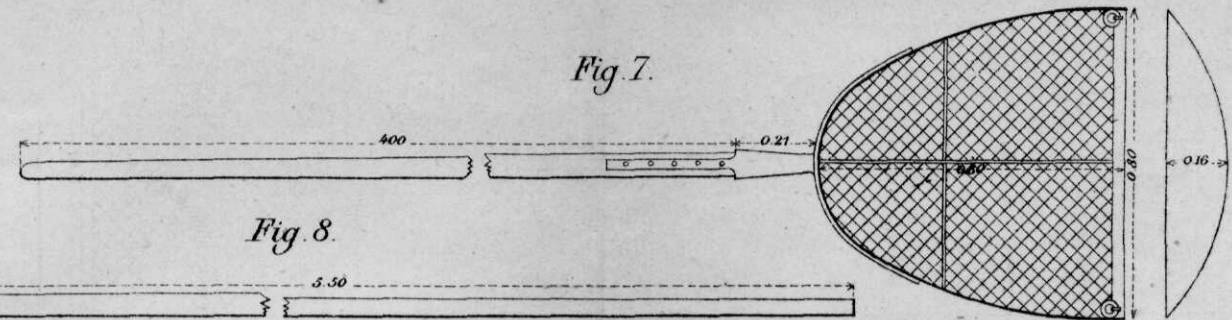
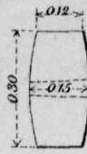


Fig. 7.

Fig. 8.

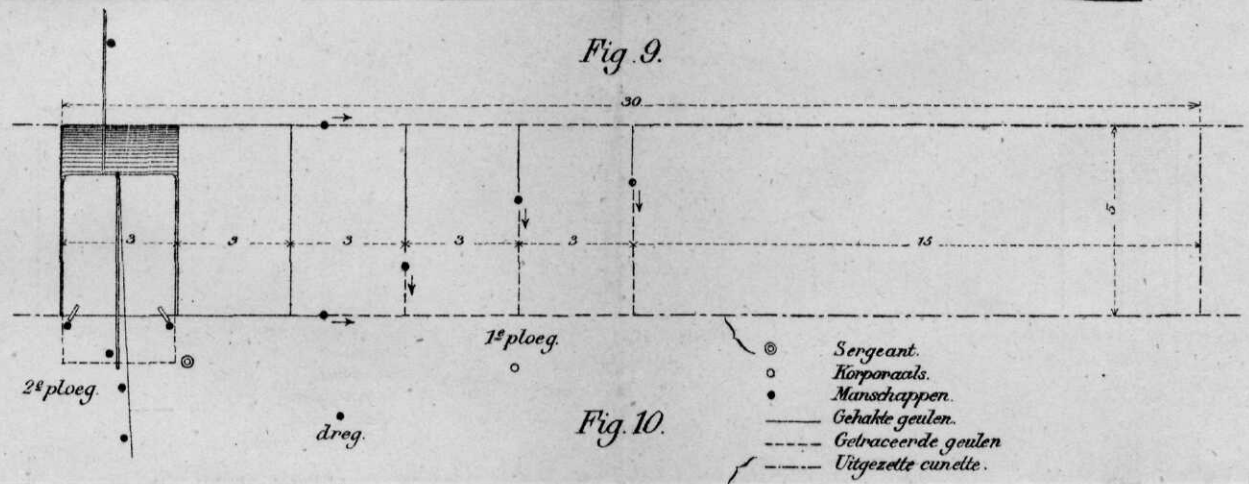


Fig. 9.

Fig. 10.

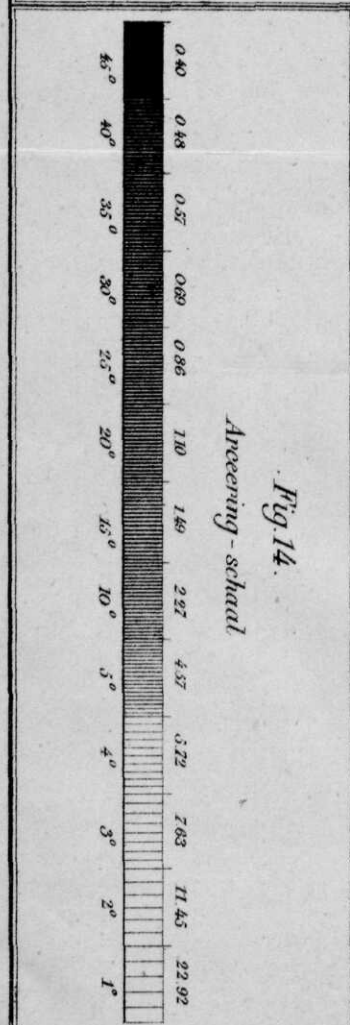


Fig. 14.

Afreening-schaal

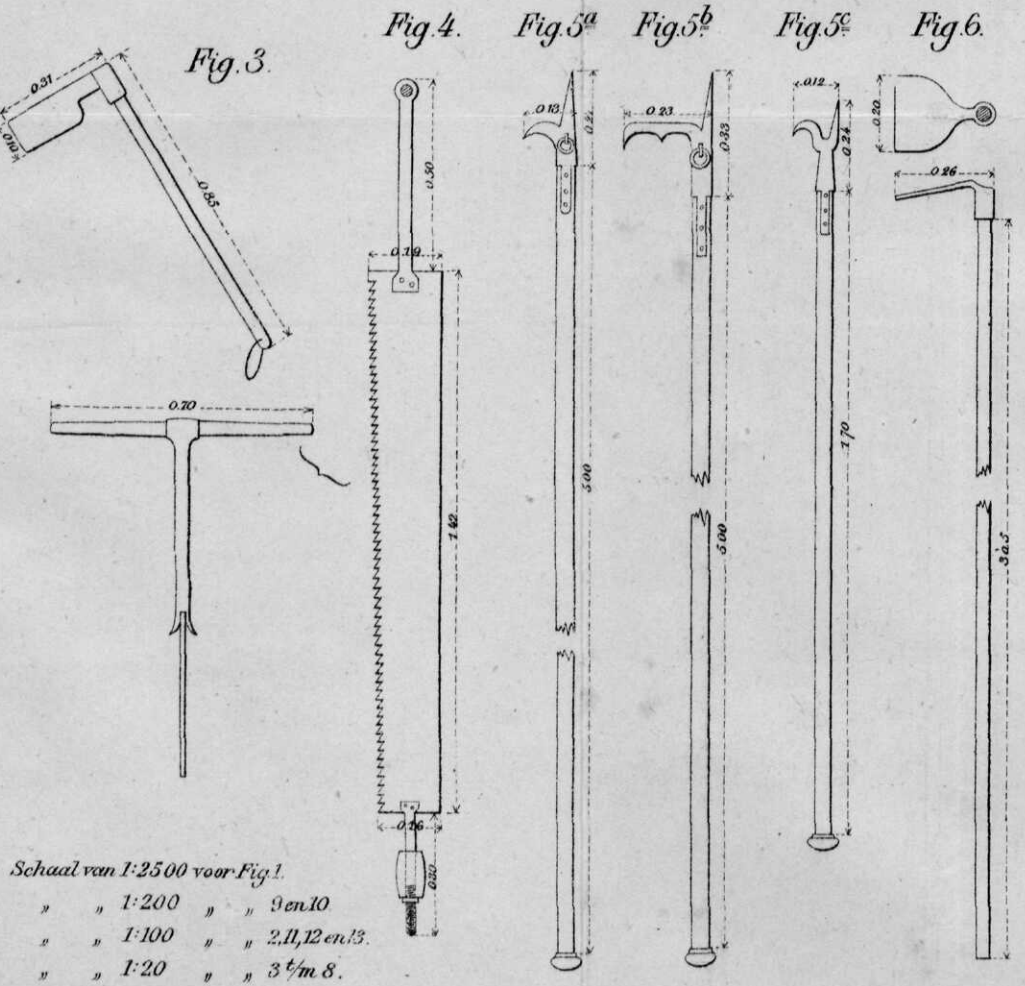


Fig. 3. Fig. 4. Fig. 5<sup>a</sup>. Fig. 5<sup>b</sup>. Fig. 5<sup>c</sup>. Fig. 6.

Schaal van 1:2500 voor Fig. 1.  
 " " 1:200 " " 9 en 10  
 " " 1:100 " " 2, 11, 12 en 13.  
 " " 1:20 " " 3 1/2 m 8.

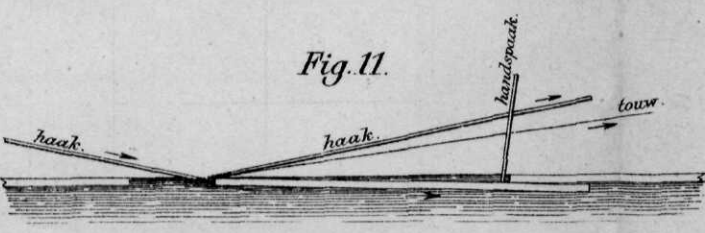


Fig. 11.



Fig. 12.

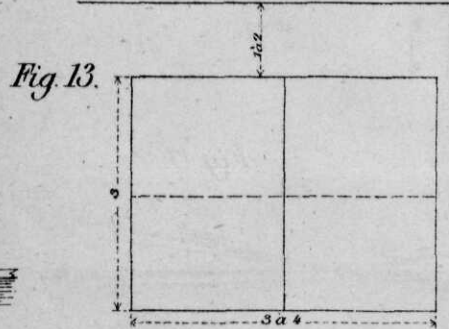
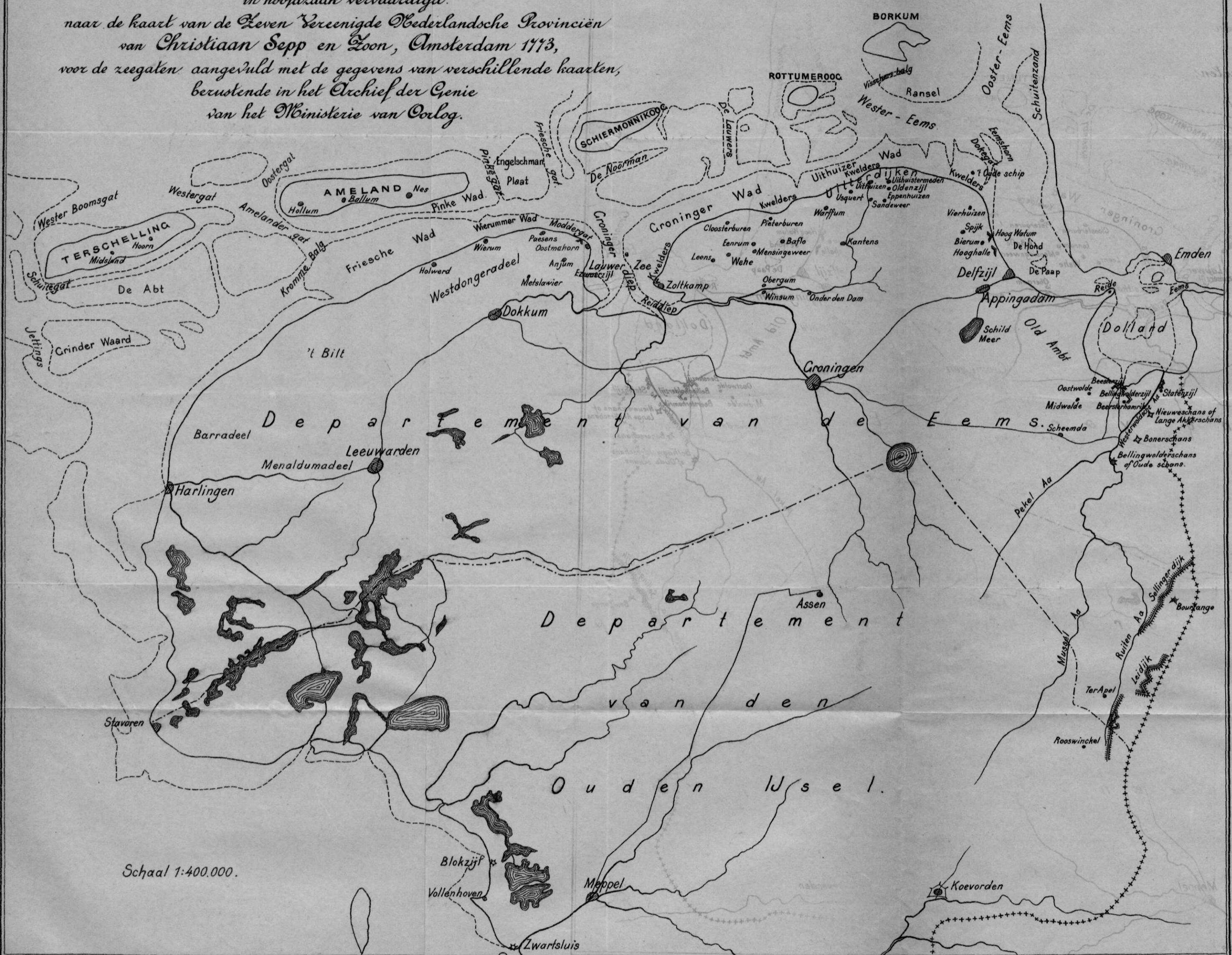


Fig. 13.

# Kaart van het Departement van de Eems

in hoofdzaak vervaardigd

naar de kaart van de Zeven Vereenigde Nederlandsche Provinciën  
van Christiaan Sepp en Zoon, Amsterdam 1773,  
voor de zeegeten aangevuld met de gegevens van verschillende kaarten,  
berustende in het Archief der Genie  
van het Ministerie van Oorlog.



Schaal 1:400.000.

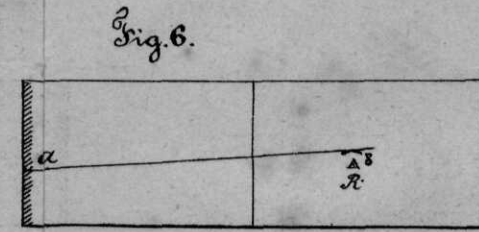
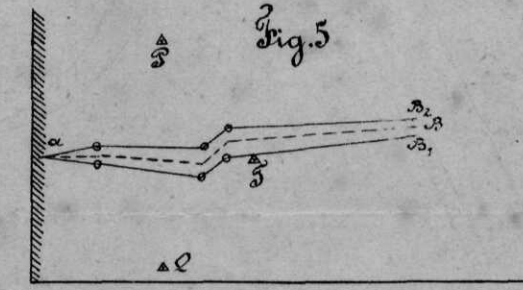
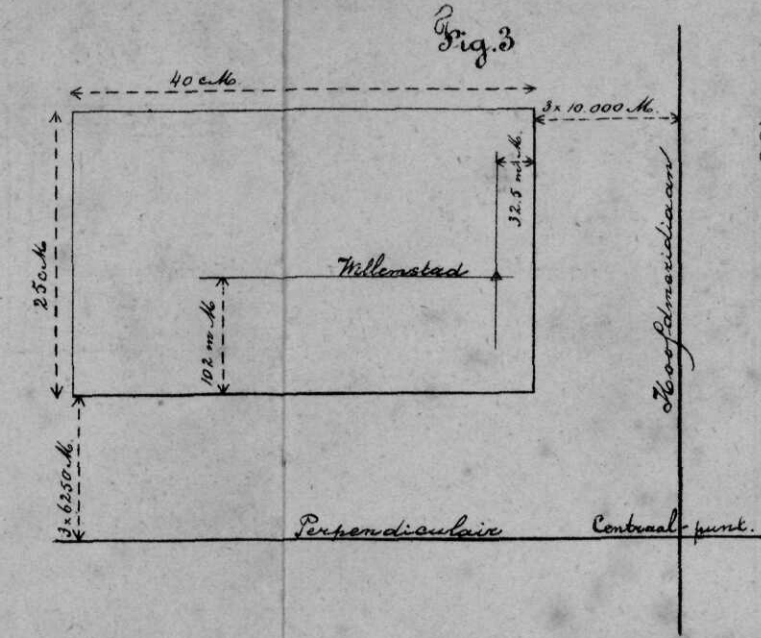
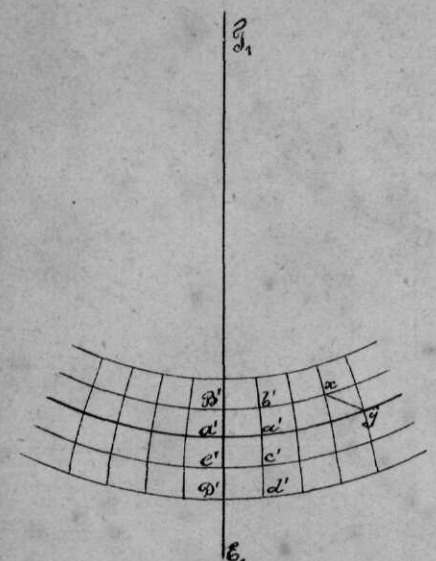
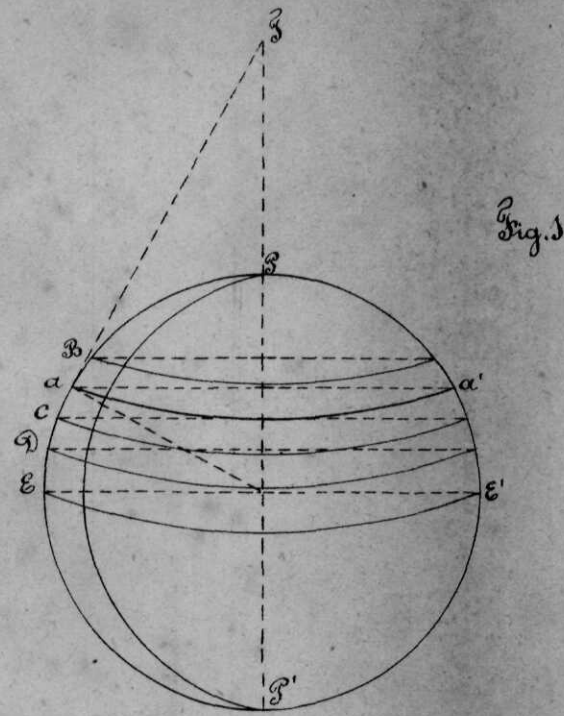
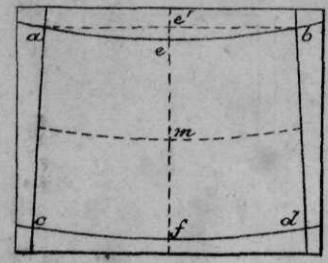
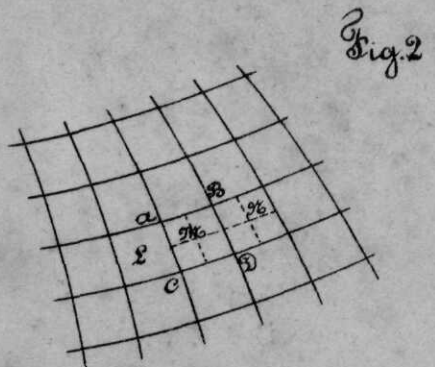


Fig. 9 Hellingmeter (1:1)

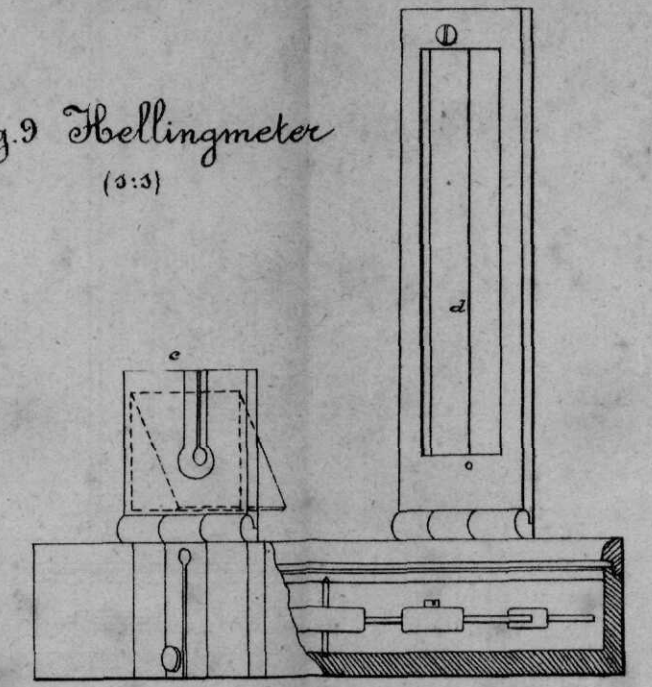


Fig. 8 Transporteur-sextant (1:1)

